

Series 6800 is a ready-to-run, high performance Portable Measurement System that is DC powered and ruggedized for mobile applications. All connections are front mounted for easy installation in tight places or on the go. 6800 systems come equipped with a conditioner, amplifier, filter and digitizer. Each channel has a front mounted RJ-45 connector for 8-wire bridge transducers. Individual channels have a differential +/- 10V input and can digitize and record data to 16-bit resolution with upper and lower programmable alarm capability that is checked each time the output is digitized. Solutions are available for providing digital outputs based on these alarm conditions.

Systems interface to a familiar Windows based operator workstation over USB 2.0 where the included software, PI660, is used for setup, display and acquisition of measurement data. PI660 allows for acquisition and control of one or many 6800 systems and provides real time data display. Data can be displayed and recorded in any number of ways, creating a versatile system that can fit any application. Series 6800 is fully compatible with Pacific Instruments' Series 6000 Transducer Data Acquisition Systems. Custom configurations are easily accommodated with this system; please contact our sales engineers for additional information.



PI660 TURNKEY SOFTWARE

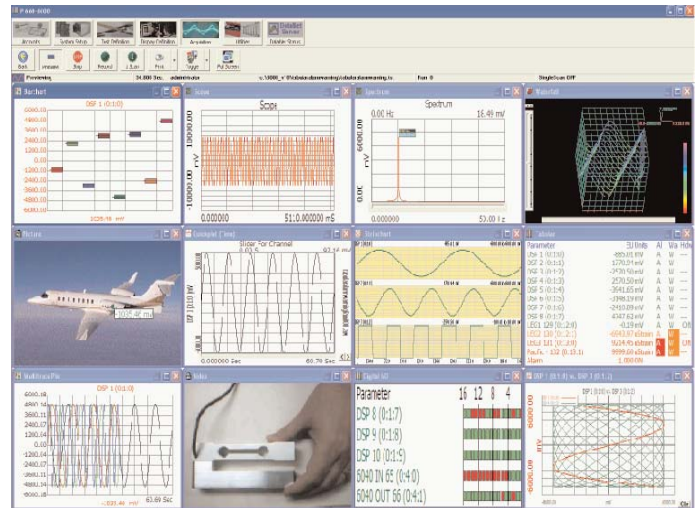
PI660 software is the choice for test management, data acquisition, and data display. PI660 controls the Pacific Instruments Series 6800 Data Acquisition System. It provides all the tools for test definition, test setup and tracking, transducer calibration, data acquisition and display, data replay, data export, and test quality validation. PI660 is turnkey, intuitive and easy to use. The ribbon style control panel provides logical access to the various steps of programming. The software even supports a password protected user account mode where functionality can be turned on or off based on the needs of the facility.

- **Intuitive Operation:** Menu programming and on-screen toolbars reduce setup time and operator errors.
- **Real-Time Displays:** Tabular and graphical data display windows on the operator and networked display workstations including Scope, FFT, Waterfall, Video, Strip Chart and more.
- **Automatic Calibration:** Gain, shunt and engineering units calibration with user-defined procedures that automate and verify the calibration process.



FEATURES

- 16 or 32 Channels Strain/Bridge Input
- 10kS/s, 16-Bit Digitizer
- Bridge Completion, Remote Sense, Shunt Calibration, Low-pass Filters
- RJ45 Inputs
- IRIG Time A, B or G
- Digital I/O
- PI660 Turnkey Software Included
- Ultra Durable Shipping Case



- **Export to Third-Party Applications:** ASCII, dPLOT, DADiSP, Universal File Format, binary and many other formats.
- **Math Engine:** The math engine is used to derive calculated parameters using data from up to nine measurement channels. Derived parameters may be displayed like regular data channels.