

*PI660 offers two distinct approaches to data acquisition & display:  
a ready-to-run application or a custom interface*

**Ready to run application**

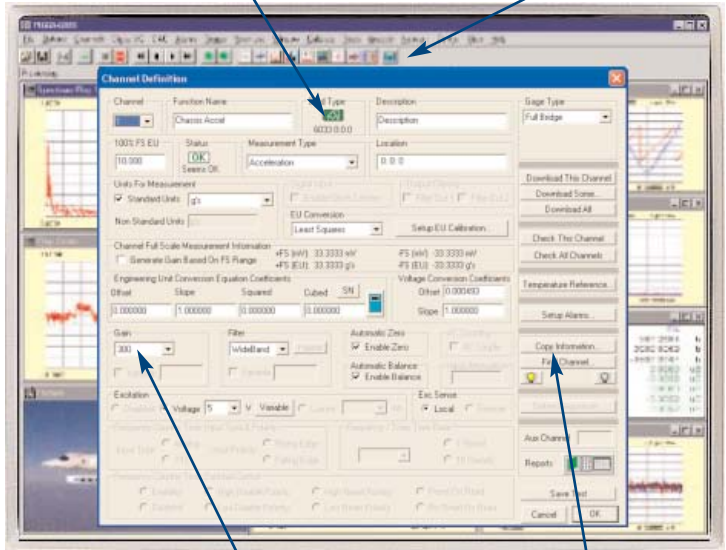
Unlike general purpose programming languages, PI660 is ready for use out of the box and specifically tailored for transducer data acquisition and display. Versatile and easy to use, PI660's operator interface employs menus and toolbars to program DAS hardware and acquire and display data. Just configure PI660 for the installed hardware and your ready to go.

PI660's programming and setup screens self-configure for the installed hardware. A single screen handles all types of analog signal conditioning making it easy for the operator to navigate. Individual selections like gain, filter and excitation are chosen from drop-down menus configured for the installed module.

Toolbars provide quick selection of frequently used routines such as start and stop data preview and recording, playback, single scan, and data displays. Buttons also launch data plotting, export and analysis applications.

Setup screen self-configures to match installed hardware

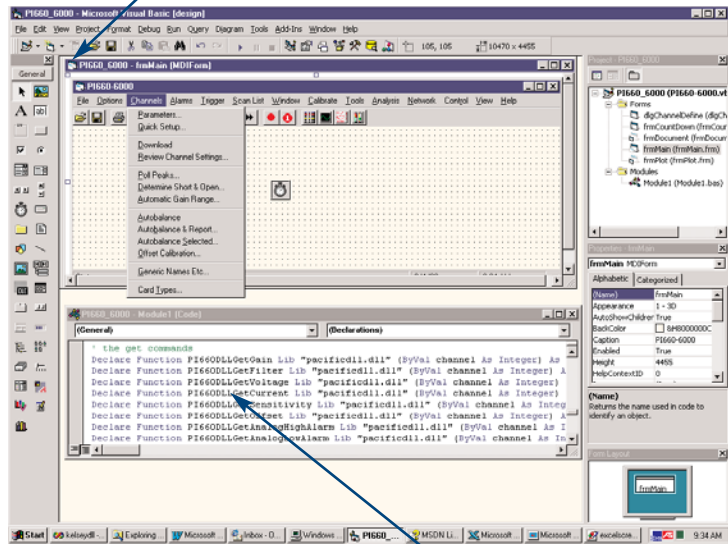
Toolbar with frequently used commands and screens



Only controls pertaining to the channel being programmed are active

Buttons access auxiliary setup screens such as alarms and copy

Design Visual Basic custom applications using PI660 CMD



Calls to routines in PI660 DLL that implement DAS functionality

**Custom applications**

Creating custom software applications is simple using the Component Module Dynamic Link Library (CMD) that is supplied with PI660XP and PI660XPS. Similar to but more powerful than an Application Programmer's Interface, the CMD facilitates custom applications that can provide facility and test control as well as support for third party hardware and software.

Any Window's programming software, Visual Basic, LabVIEW, HP VEE, Excel, C++ or C may be used to create custom applications that call high-level data acquisition and display functions in the CMD. For example one call opens the screen that programs channel parameters or sets sample rates. This means the application programmer does not need to create acquisition and display software and is free to concentrate on programming the test and facility operation.