

## Smart-menu system programming - just point and click to setup, calibrate, record, view and export data

### **Open a previous test file or create a new test file to program a test**

Test files contain all programmed operating parameters, calibration and other information necessary to implement a test. Either PI660 or Access files may be used.

### **Automatic calibration saves time and assures accuracy**

Calibration results are automatically documented to assure traceability. Calibration "procedures" simplify programming for multiple similar measurements.

### **Test readiness verifies that settings are correct and system is ready to record**

Open the Test Readiness Review screen that contains an operator configured checklist and the status of each checked item.

### **Preview displays data without recording**

Preview starts data acquisition in the 6000's ring buffer with active alarms and displays. Measurement data is displayed on the operator workstation and sent to network display workstations.

### **View real-time data displayed on operator and client workstations**

Open, configure and arrange real time display windows while data is being recorded or played-back. Display update rates are adjustable.

### **Immediate viewing of recorded data by playback to displays**

Select fast, slow, forward, reverse or pause to view details. Go to a particular time or location in the test file. Search for specified signal criteria.

### **Switch display screens to view data in a different way.**

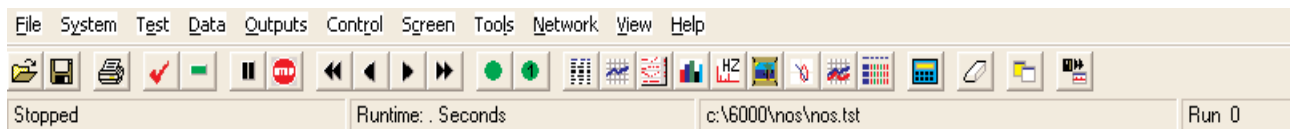
Any number of display screens may be configured and saved. Switch back and forth between two screens with a mouse click.

### **Saving the test file enables the test to be opened without reprogramming.**

To save time the saved test file can be modified and renamed for another similar test.

### **PI660 Status Bar**

Status bar below the menu toolbar shows system status, time into test or playback and test filename.



### **Recording is started by the operator, remote control or Alarms**

The remote control TTL input allows recording to be controlled by an external device. Data can overwrite the current file or be recorded in a new file that carries the test name, run number and ".dat" extension.

### **Single scan is used to record one pass through the scan table**

Record one pass through the scan list to an ASCII file. Each time the button is clicked or at selected time intervals a single scan is recorded. Single scan can also be initiated by a digital input at rates up to 1000 scans per second.

### **Preview, recording or playback is stopped by the operator, time out or remote control**

Use the stop button, a programmed recording time or the remote control input to stop recording. After stopping a data stamp containing test setup and calibration information is appended to the data file.

### **User Created Application Specific Menus**

The PI660 Component Module DLL (CMD) enables users to create their own menus and toolbars providing a means to customize operation. Not only can operation of the 6000 be changed but controls can be added for third-party and facility hardware and test control. Multi-level operating menus can be added that provide password control of privileges granted the operator. Or structure a test menu that requires specified operations or conditions to be met before proceeding with the next step. These are just a few examples of specialized operating menus that have been implemented for the 6000 using the PI660CMD and a glimpse of how the CMD can be used to customize application software.